



Photo: BARIT

BARiT MASTERTERRAZZO® | Designer Floors

Praxis Prof. Dr. Nessler, Freiberg



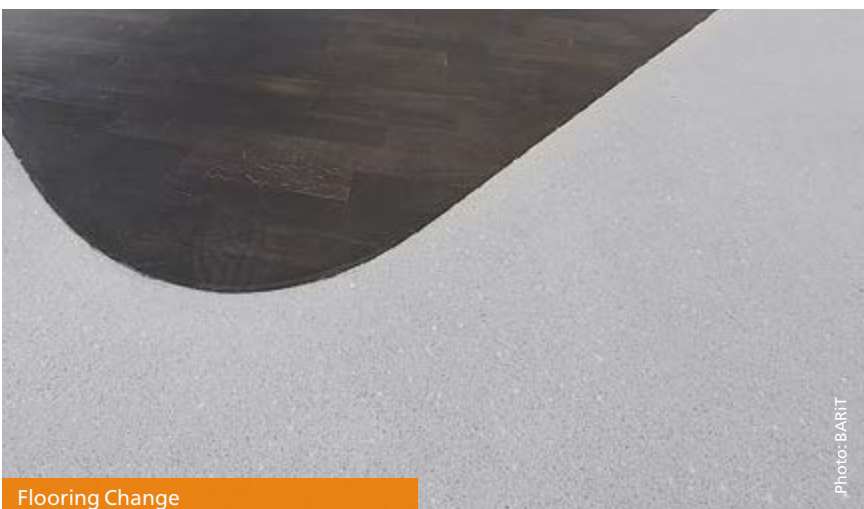
Praxis Prof. Dr. Nessler, Freiberg

Photo: BARIT

DEFINITION AND PURPOSE

The epoxy resin-bound BARiT MASTERTERRAZZO® combines classic terrazzo high-lights with varied colours and aggregates at a very low construction height. Sharp and round thermalite aggregates in natural colours give the floor a modern classic terrazzo look.

Design is paramount for MASTERTERRAZZO®. The customer determines the colouring of the base grain and additionally the size, quality and quantity of aggregates.

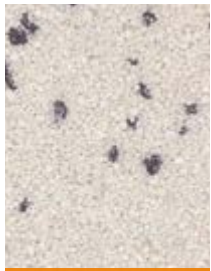


Flooring Change

Photo: BARIT

Quick Info

- seamless
- aesthetic
- slip-resistant in accordance with BGR 181 R 9
- chemical and mechanical stability
- suitable for wheelchairs
- easy to clean and disinfect
- fire classification Bfl-s1
- Low emissions according to AGBB



Traffic white -
terralith 1



Traffic white -
terralith 5



graphiteblack -
terralith

APPEARANCE

The basic granules of MASTERTERRAZZO® can be selected according to RAL colors. In addition, BARiT offers a large spectrum for Terralith gravel: Crystal white, creek stone, amber or coal black gravel create a living terrazzo effect. Pastel colored terrazos in pearl white, light ivory, light gray or platinum gravel combined with precious white crystal or natural gray slate granules give a classic Terrazzo look. Colored granules such as fresh green tones emphasize an individually designed terrazzo. Specialized granules are available based on a selection of RAL colors for areas over 200 m².

FEATURES

MASTERTERRAZZO® consists of water-clear epoxy resin and polyurethane coated colorfast granules, which are combined with Terralith granules. The supplemental granules can be up to 2.5 mm in size, sharp-edged or rounded. The coating can be installed in a layer 8 - 10 mm thickness. It can be installed on top of calcium-sulfate based false and subflooring, cement as well as anhydrite flooring, and especially on heated flooring. This covering is installed without any joints or edges, eliminating any hazards for tripping.

MASTERTERRAZZO®, due to its load-bearing capacity, is ideal for high traffic areas and due to its seamless surface remains abrasion-free even with permanent exposure. With its seamless surface MASTERTERRAZZO® is easy to clean, maintain and disinfect and maintain, thus providing hygienic protection.

TYPE	MASTERTERRAZZO®
Binding agent	EP-resin
Fillers	Granulates
Solid matters	100 %
Flash point	> 100 °C
Consumption/m ²	2 kg/mm
Grain	BARiT card of grains
Grade of gloss	silk gloss or mat
Fire behaviour DIN EN 13501-1	Bfl-s1, hardly inflammable
Bending tensile strength DIN 1164**	> 10 N/mm ²
Compression strength DIN 1164**	> 40 N/mm ²
Adhesive pull strength DIN EN 24624	> 1 N/mm ²
Light-fastness	conditionally resisting to UV
Anti-slip Class DIN 51130	R9, R11
Light-Temperature resistance	100 °C temporarily -30 °C to +70 °C consistently
Chemical resistance	to resistance list and self test
Working under conditions of:	
air humidity	40 - 85%
residual moisture of the ground	< 3 %
ground temperature min.	18 °C
ground temperature max.	22 °C
Curing time at 20°C:	
not sticky	after 12 hours
walking admissible	after 16 hours
final hardness	after 7 days
Mechanical stability	after 7 days fully capable of bearing
Cleaning	BARiT Cleaner*

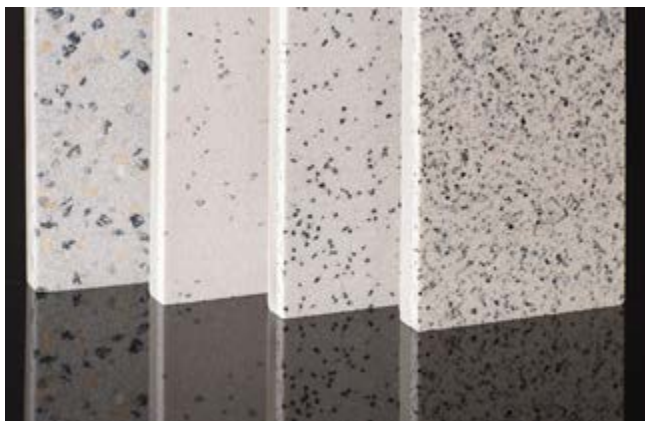
** with prism method - according to AGI Worksheet A 81 and BEB worksheets KH 5

* according to cleaning and care instructions



Formation of Flooring Joints

Photo: BARiT



Flooring Connection to Convectors

Photo: BARiT