



BARiT FLOORDRAINS | Details

DEFINITION AND PURPOSE

BARiT FLOOR DRAIN is made of stainless V2A steel.

Solid frames, chamfered edges, drain bodies of one piece only and sleeve collars afford the very best stability. For covering, there are solid plates with and without skid protection, gridiron grating and bar grates.



smooth panel



Anti-slip panel



sterile cover with siphon



grate

FEATURES

The BARiT FLOOR DRAIN is made of rust-free V2A steel. Additional stability is provided for with its solid frame for the ground connection, rounded edges, and one-piece drain body. Depending on the customer's wishes, solid covers with and without anti-slip surfaces, grid and bar grates are available. Lockable covers that emit little odor or are liquid-tight can be used in pharmaceutical and cleanroom areas.

Suction levers allow for the opening and closing of floor drains. Removable bell-shaped siphons and dirt collecting baskets, which are placed above the water level, provide for additional hygienic protection.

As part of BARiT's services, professional installation can also be included alongside supplying the floor drains. For a coupled and seamless integration, these are incorporated into resin concrete. Extensive variations in the type of floor drains offer a wide range of solutions.

V2A floor drains can be easily cleaned with our BARiT CLEANER.

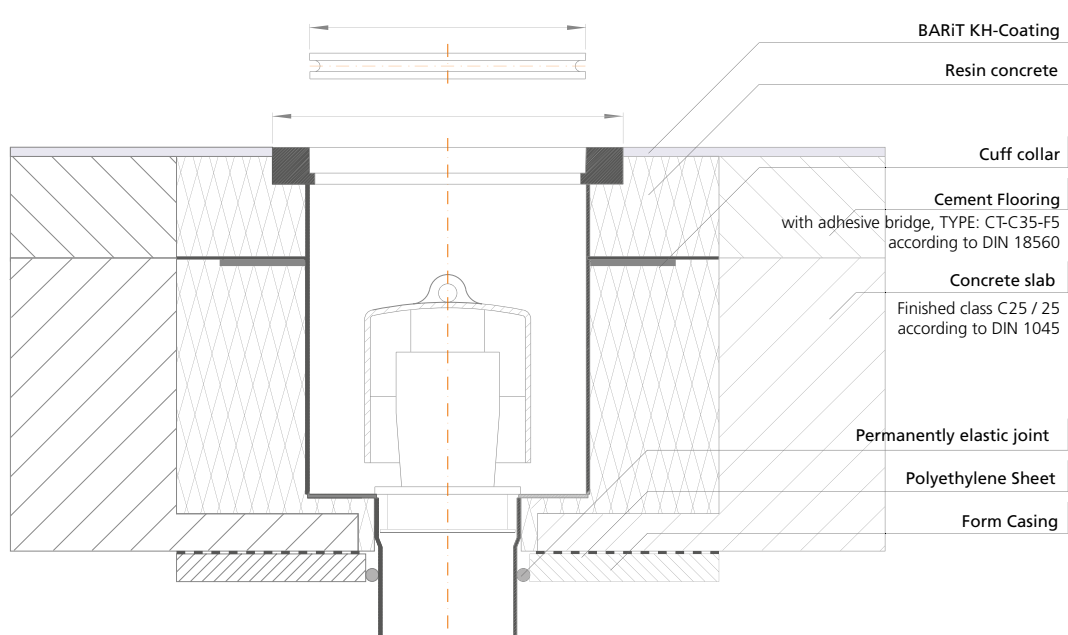
Quick Info

- stainless of V2A steel
- drain body of one piece only
- solid covers
- covers to meet requirements of pharmaceuticals and clean rooms
- easy cleaning
- thermal loads admissible
- mechanically stable

BARiT FLOORDRAINS | Details

TYPE	FLOORDRAINS, one part
Material	Stainless steel AISI 304 1.4301
Material thickness	2 mm deep drawn 1,5 mm
Surface	chemically descaled
Construction	round bodied no channel connection
Cleaning	BARiT Cleaner*
Firesafety	on demand

* according to cleaning and care instructions



TYPE	BA 150	BA 200	BA 250
Outlet	DN 70 mm	DN 100 mm	DN 100 mm
Flow Ltr./sec.	1,6-2,2	2,7-3,1	3,5
Inside Diameter	Ø185	Ø235	Ø285
Outside Diameter of Frame	Ø205	Ø255	Ø305
Outside Diameter of Drainbody	Ø153	Ø203	Ø253
Length of Outlet Pipe	70	70	80
Height without Outlet Pipe	200	240	260
Height of Frame	30	30	30
Water Level of Trap	60	60	60

all measurements in mm

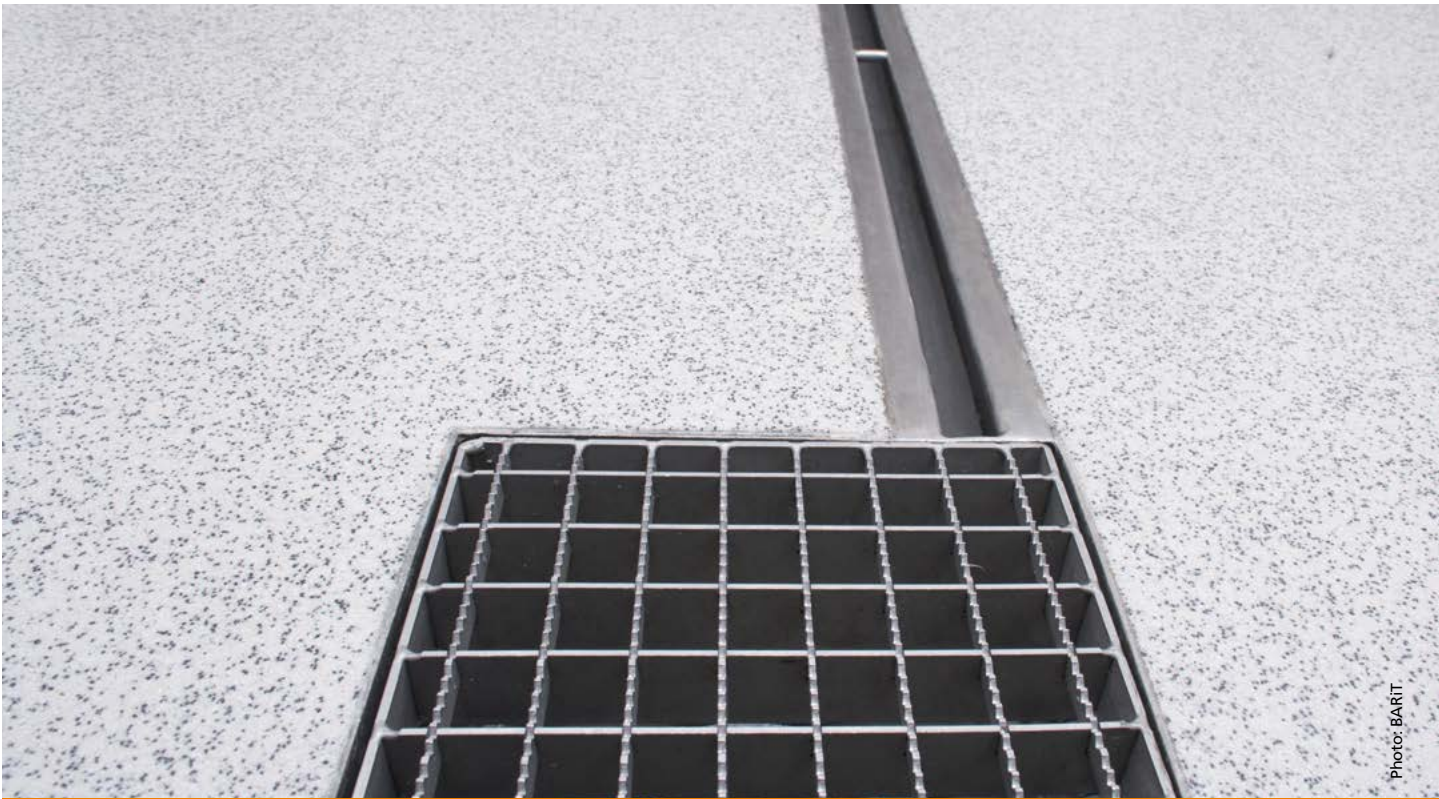


Photo: BARiT

BARiT SLOT CHANNEL | Details

Sparkassenversicherung, Stuttgart

DEFINITION AND PURPOSE

Slotted channels are for the drainage of those rooms where small quantities of water only to be removed. Gradients being integrated assure a high flow rate and the very best self-purification. BARiT slotted channels made of V2A steel with proper edges, welded distance plates and reinforcing angles with oblong holes allow heavy mechanical loads.

FEATURES

BARiT SLOTTED CHANNEL is made of rust-free V2A steel. Additional stability for high loads is provided for with professional bends, welded spacer ribbing and lengthwise reinforcement brackets. As part of BARiT's services, professional installation can also be included along with supplying the SLOTTED CHANNELS.

For a coupled and seamless integration, these are incorporated into resin concrete. Extensive standard versions offer a wide range of solutions. Additional sloped channels with different sizes can be special ordered on request. V2A floor drains can be easily cleaned with our BARiT CLEANER.



Fully visible
slotted channel



Slotted channel with dirt
trap

Quick Info

- custom tailored
- gradients integrated
- stainless of V2A steel
- solid covers
- easy cleaning
- mechanical stability
- resisting to thermal loads

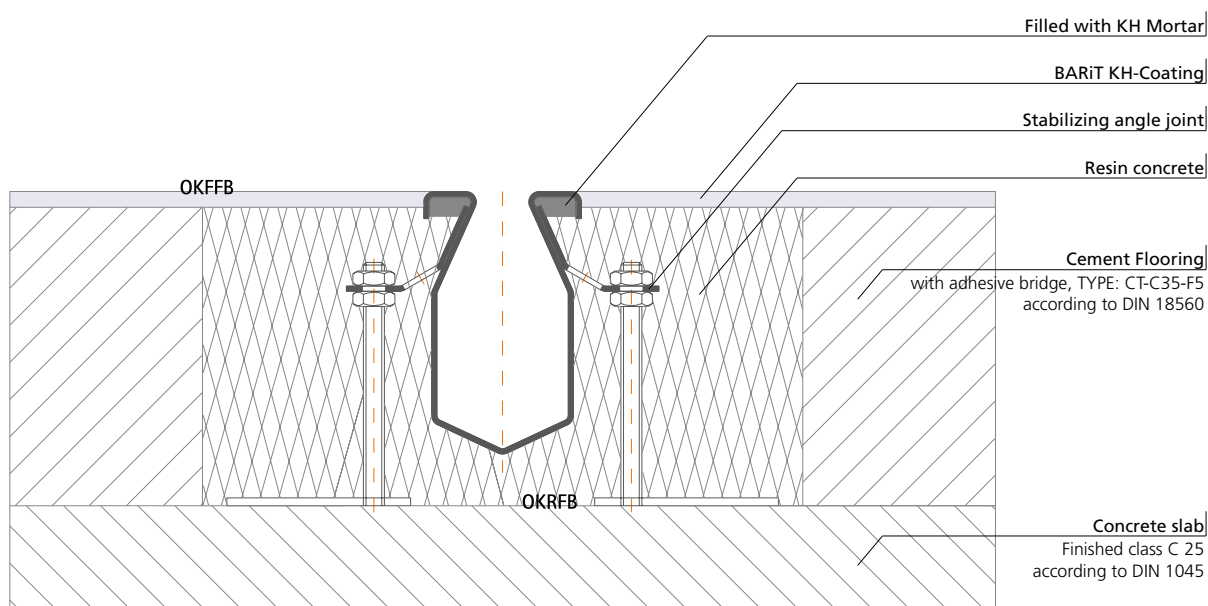
BARiT SLOT CHANNEL | Details

TYPE	SLOT CHANNEL
Material	Stainless steel AISI 304 1.4301
Material thickness	2/3 mm
Surface	chemically descaled
Execution	ca. 0,5 m
Slot Width	20 mm
Slot Width (barefoot area)	8 mm (min. height 78 mm)
Built-in-Fall	0,6 %
Cleaning	BARiT Cleaner*
Firesafety	on demand

* according to cleaning and care instructions



Bars provide mechanical stability



TYPE	Standard SRC 50/2	Special Slot Channel SRC 75/2	Special Slot Channel SRC 75/3
Overall Width	136	151	153
Channel Width	50	75	75
Max. Height	296	292	204
Min. Height	60	78	78
Max. Length	39	36	21

all measurements in mm



Photo: BARiT

BARiT TROUGH CONVEYOR | Details

DEFINITION AND PURPOSE

The BARiT TROUGH CONVEYOR made of stainless V2A steel gets custom-tailored with longitudinal and crosswise slopes integrated. High stability is assured by continuously edged grate plates, reinforcing angles with oblong holes and welded distance plates.



smooth panel



Anti-slip panel



grate



grate

FEATURES

BARiT BOXED GUTTER is made of rust-free V2A steel. Boxed gutters are custom-made with integrated longitudinal sloping or longitudinal and transversal sloping. Additional stability is provided throughout with inward facing grill supports, lengthwise reinforcement brackets and welded spacer ribbing. Not only the professional bending of the material, but also the appropriate cover ensure a high load capacity. Depending on the customer's wishes, solid covers with and without anti-slip surfaces and bar grates are available. The material thickness of 2 mm ensures a high thermal and mechanical resistance.

As part of BARiT's services, professional installation can also be included along with supplying the BOXED GUTTERS. For a coupled and seamless integration, these are incorporated into resin concrete. Extensive standard versions offer a wide range of solutions. Additional types of sloping, thicknesses and profiles, and lateral or central floor drains can be special ordered on request.

V2A boxed gutters can be easily cleaned with our BARiT CLEANER.

Quick Info

- custom-tailored
- integrated sloping
- stainless of V2A steel
- solid covers
- easy cleaning
- mechanical stability
- resisting to thermal loads

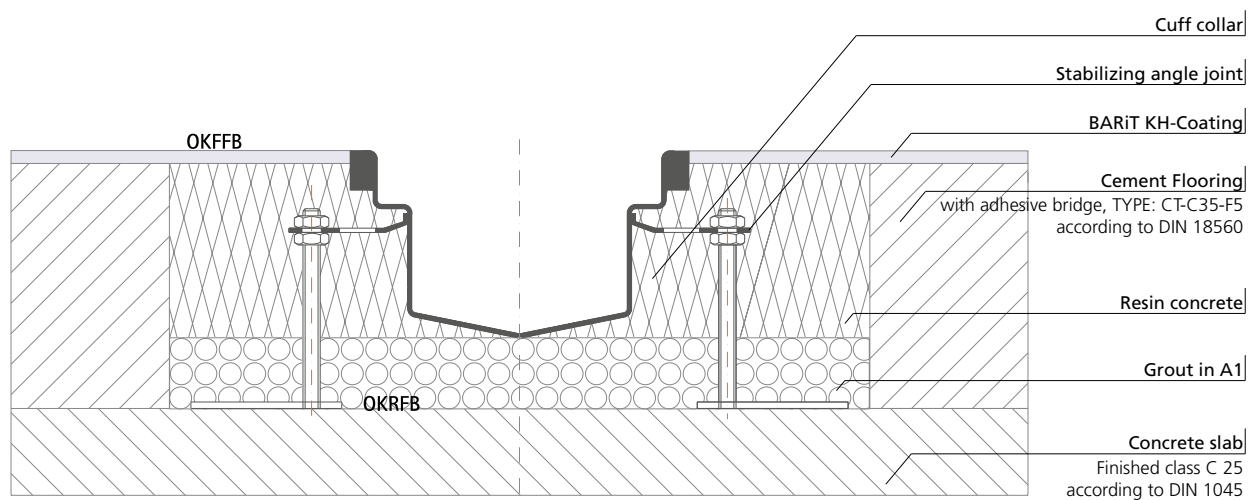
BARiT TROUGH CONVEYOR | Details

TYPE	KASTENRINNE
Material	Stainless steel AISI 304 1.4301
Material thickness	2 mm
Space between distances	ca. 1 m
Surface	chemically descaled
Built-in Fall	1 %
Cleaning	BARiT Cleaner*
Firesafety	on demand

* according to cleaning and care instructions



Bars provide mechanical stability and impact protection

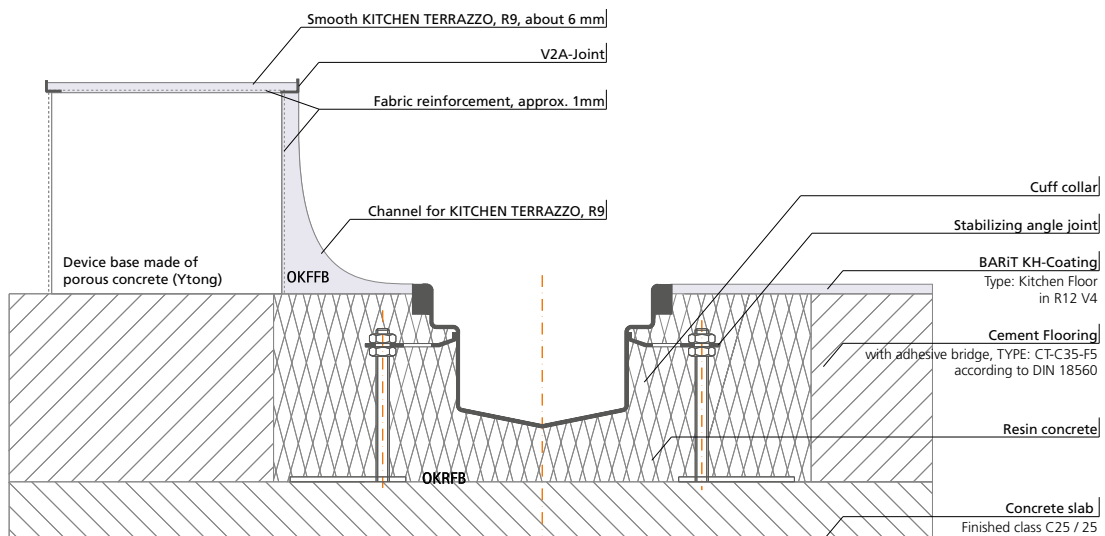


TYPE	KR 118	KR 172	KR 222	KR 272	KR 322	KR 400
Overall Width	118	172	222	272	322	400
Channel Width	50	100	150	200	250	328
Cover Thickness	20	25	20-40	20-40	20-40	25-50
Cover Width	74	130	180	230	280	358
Max. Height	150	310	341	391	441	519
Min. Height	40	55	55	55	55	55
Drain Type	150-300	150-300	150-300	150-300	150-300	150-300

all measurements in mm



Device Base with Boxed Gutter

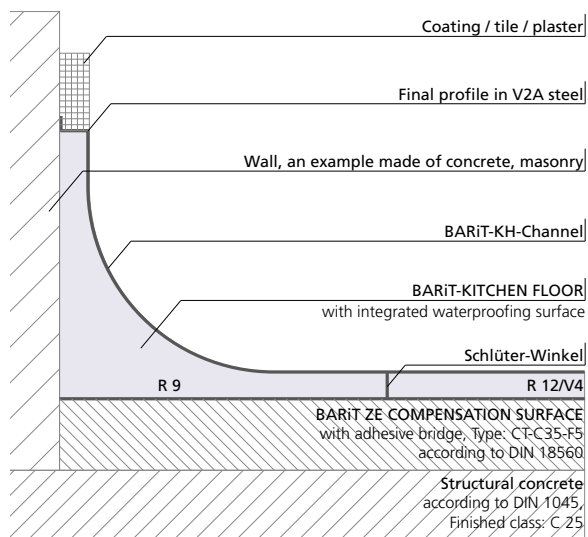


Quick Info

- custom-tailored
- stainless of V2A steel
- mechanical stability
- resisting to thermal loads
- integrated sloping
- easy cleaning



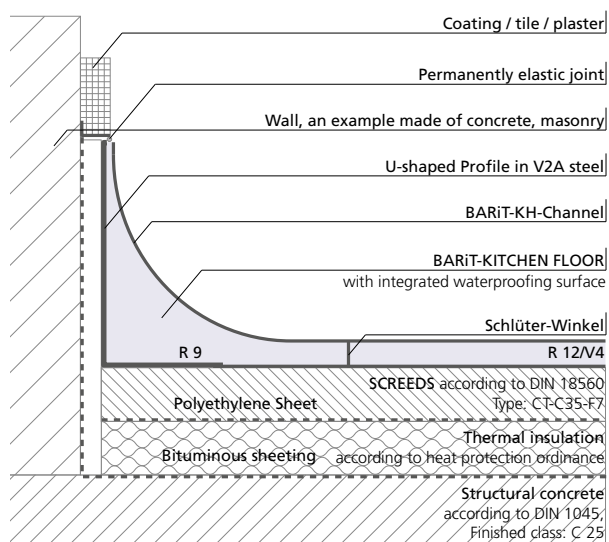
Channels for the composite are modeled into a smooth surface on the pillars.



Channel in the composite



Channels in the composite are worked into a smooth surface on the tiles.



Channel on „floating floor“

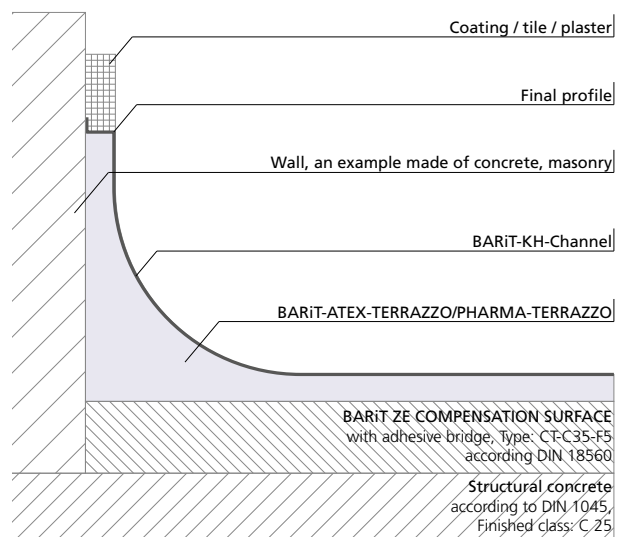
Quick Info

- jointless
- leak-proof
- hand-moulded
- smooth flutes
- easy cleaning

BARiT CHANNEL in Pharma/Cleanroom/Hospital | Details



Prefabrication of a channel for a surgical doorframe



Channel in the composite



Smooth Channel in Sterile Area

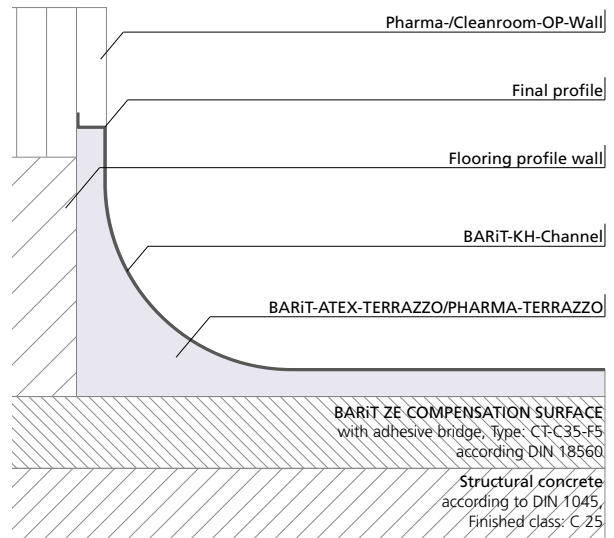
Quick Info

- jointless
- leak-proof
- hand-moulded
- smooth flutes
- easy cleaning

BARiT CHANNEL in Pharma/Cleanroom/Hospital | Details



Channels are implemented by hand on the walls of a pharmaceutical cleanroom or operating room.



Channel in the composite



Channel with Wall Connection

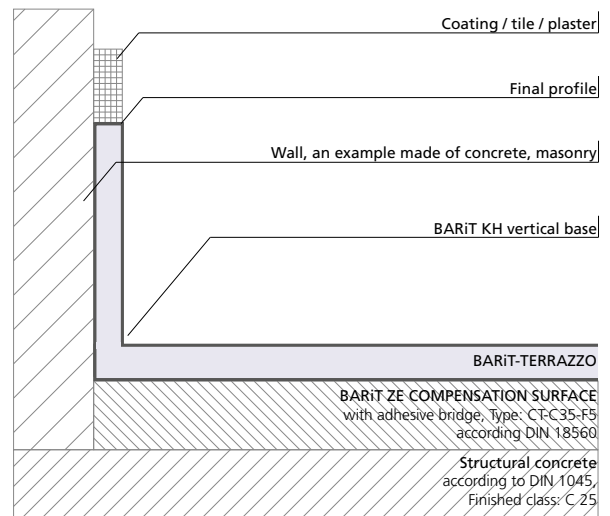
Quick Info

- jointless
- leak-proof
- hand-moulded
- smooth flutes
- easy cleaning

BARiT TRIANGULAR BASE AND VERTICAL BASE | Details



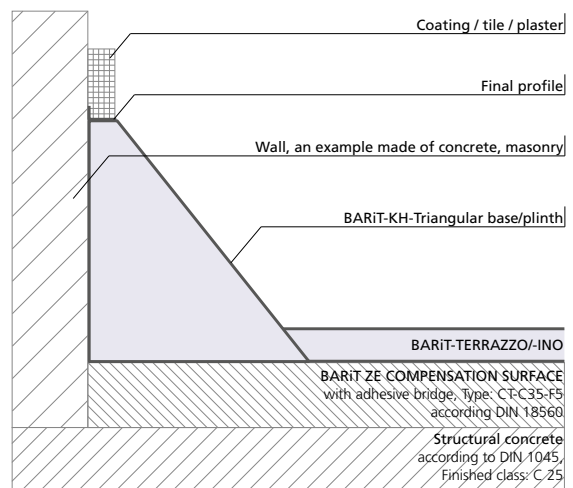
Vertical base on „floating floor“



Vertically in the base composite



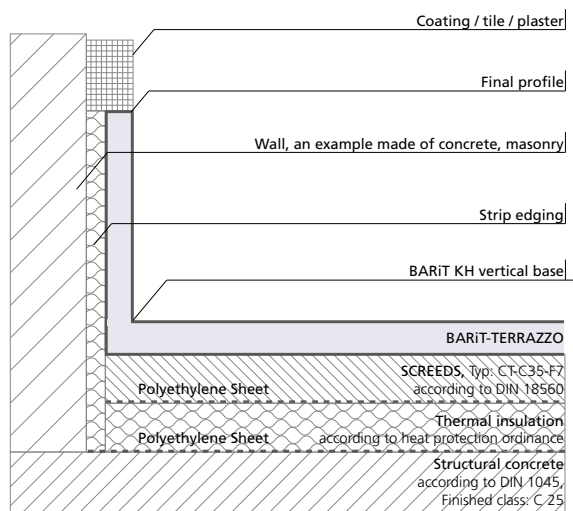
Triangular base/plinth is accurately modeled by hand



Triangular base/plinth in composite



Perpendicular base is accurately modeled by hand



Vertical base with strip edging

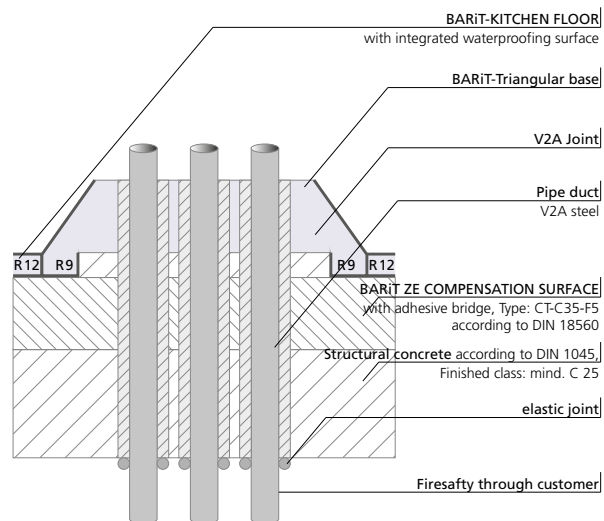
Quick Info

- jointless
- smooth flutes
- leak-proof
- easy cleaning
- hand-moulded

BARiT MEDIA PASSAGES | Details



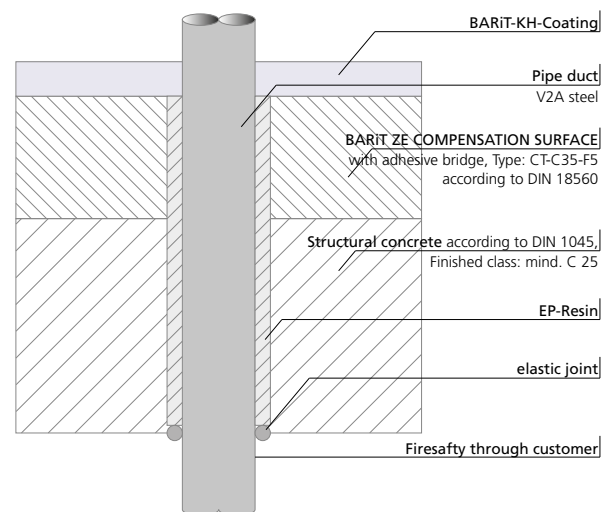
Interrupting element with triangular base/plinth



Installation of equipment bases, as in a production kitchen



Precise and accurate application for interrupting elements



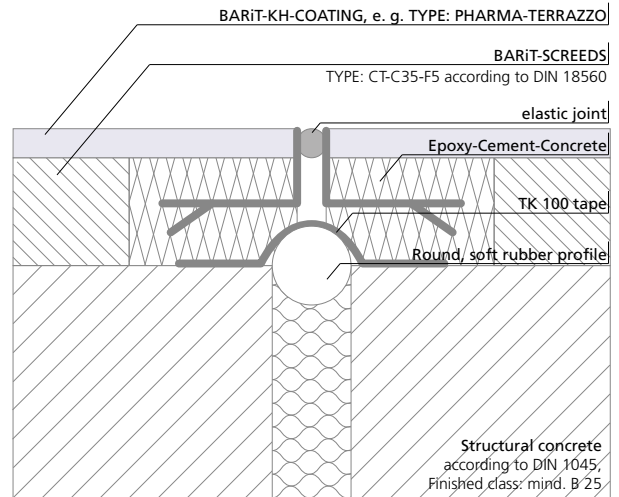
Installation for interrupting elements

Quick Info

- jointless
- easy cleaning
- accurate and precise approach
- leakage-proof



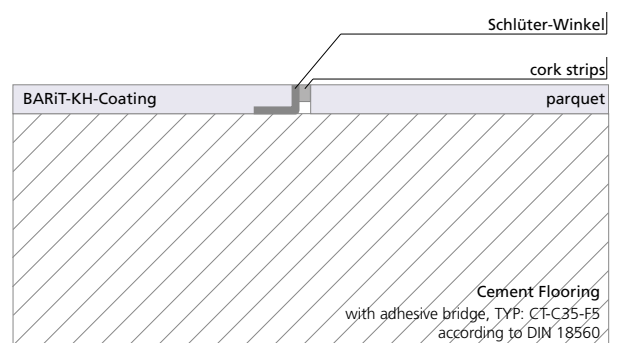
Expansion joints are installed in resin concrete.



Installation of expansion joints



Flooring change from BARiT KH Flooring to Parquet



Installation of flooring change

Quick Info

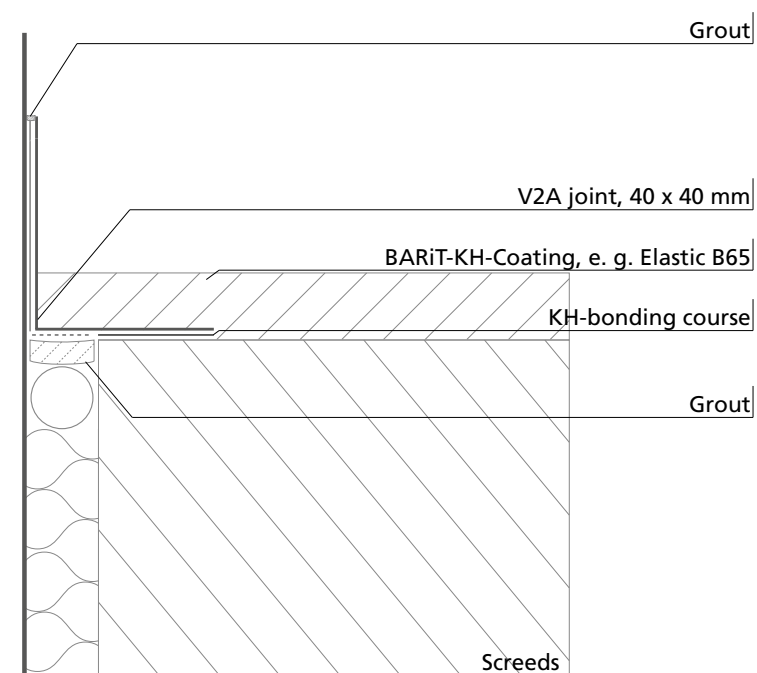
- seamless
- solid
- mechanically stable



Kita Scharnhäuser Park, Scharnhäusen



Kita Scharnhäuser Park, Scharnhäusen



Quick Info

- coated stainless steel angle joint colormatched to BARiT flooring and wall covering