



BARiT KITCHEN FLOOR IN R12 | Commercial Kitchen

Kreissparkasse Ludwigsburg



Sparkassenversicherung, Stuttgart

DEFINITION AND PURPOSE

Seamless, anti-slip and trip-proof kitchen floors are essential for accident prevention in commercial kitchens and cold rooms. The seamless BARiT KITCHEN FLOOR meets all functionality demands due to its three-tiered step security. For a waterproof industrial kitchen, BARiT offers a complete combined system with screed, gutters and drains, waterproofing and kitchen floor.



Kreissparkasse Ludwigsburg

Quick Info

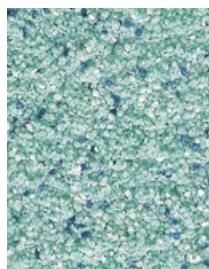
- slip-proof in accordance with BGR 181 R 12 V4
- non-slip according to BGR 181, R 11
- smooth according to BGR 181, R 10, unobstructed areas
- application on site in accordance with DIN 10506
- seamless
- walk over silently and vibration-free
- mechanical and chemical stability
- thermal resistance
- durable and hardwearing
- impact noise improvement according to 13 dB DIN 52210



black/white



blue/white



light green /
blue/white

APPEARANCE

BARiT KITCHEN FLOOR can be installed with, for example, blue / white, black / white or additionally with object-specific granules. The design can combine the requirements for functionality with aesthetics, along with non-slip attributes. The surface has a matte appearance that is pleasant for working.

FEATURES

The BARiT KITCHEN FLOOR system consists of high-quality, water-clear epoxy resin with polyurethane coated granules. Together, both provide for high mechanical and high chemical stability.

To achieve the anti-slip surface according to BGR 181 R 12, V 4, the multi-layer granules are incorporated into a layer thickness of 3 mm. Additionally and for optimum hygienic protection according to DIN 10506, open surfaces, grooves, and sockets are coated smoothly with R 9.

In addition, the BARiT KITCHEN FLOOR system is equipped with a 1.5 mm thick integrated sealed level that fills in cracks with a width up to 1.5 mm from the subflooring. The sealed level ensures that the surface is waterproof and withstands any thermal stress. The temperature range lies between -30 °C and 100 °C.

Ergonomically, the BARiT KITCHEN FLOOR is characterized by a high accommodation for movement while maintaining its anti-slip properties, even when fats and oils are present. In addition, the noise caused by transport trolleys is reduced thanks to the seamless flooring system.

Hygienic protection, ease of cleaning, maintenance and disinfection highlight the quality of BARiT KITCHEN FLOOR. Through the use of recommended cleaning machines and cleaning agents, the seamless surface can be cleaned efficiently and economically.

TYPE	KITCHEN FLOOR R 12
Binding agent	EP-resin
Fillers	Granulates
Solid matters	approx. 99 %
Flash point	> 100 °C
Consumption/m ²	2 kg/mm
Grain	BARiT card of grains
Grade of gloss	silk gloss
Fire behaviour DIN EN 13501-1	Bfl-s1, hardly inflammable
Bending tensile strength DIN 1164**	> 10 N/mm ²
Compression strength DIN 1164**	> 40 N/mm ²
Adhesive pull strength DIN EN 24624	> 1,0 N/mm ²
Light-fastness	conditionally resisting to UV
Temperature resistance	- 30 °C to + 70 °C
Chemical resistance	to resistance list and self test
Working under conditions of:	
air humidity	40 - 85%
residual moisture of the ground	< 3 %
ground temperature min.	18 °C
ground temperature max.	22 °C
Curing time at 20°C:	
not sticky	after 12 hours
walking admissible	after 16 hours
final hardness	after 7 days
Mechanical stability	after 7 days fully capable of bearing
Cleaning	BARiT Cleaner*

** with prism method - according to AGI Worksheet A 81 and BEB worksheets KH 5

* according to cleaning and care instructions



Stainless Steel Door Frame



Triangular base/plinth with Dishwasher



Photo: BARiT

BARiT KITCHEN FLOOR IN R11 | Commercial Kitchen

SGL Carbon, Wiesbaden



DEFINITION AND PURPOSE

Hygienic safety, good slip resistance and creative variety for the transformation of staff restaurants, free-flow and catering concepts.

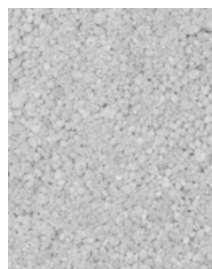
The low panel thickness, seamless design and high load capacity speak for themselves in achieving a special atmosphere. Through its modest homogeneity, BARiT KITCHEN FLOOR blends harmoniously into sensitive colour concepts. The monochrome, single-color aesthetic emphasises modernity.

Quick Info

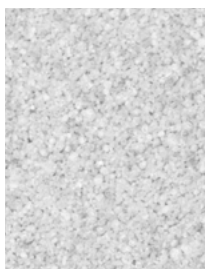
- seamless
- slip-proof according to BGR 181, R 11
- mechanically and chemically resistant
- pressure resistant
- low abrasion
- easy to clean and disinfect

SGL Carbon, Wiesbaden

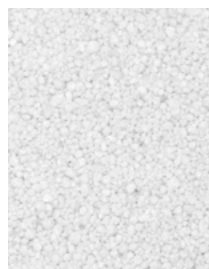
Photo: BARiT



RAL 7042
traffic grey



RAL 7035
light grey



RAL 9010
pure white

APPEARANCE

The ideal starting point for aesthetic appearances, the application expertise that is the hallmark of BARiT has always been greatly valued. The timeless design of the BARiT KITCHEN FLOOR is accented by the quality of the granules that give the satin finish a slightly metallic character.

BARiT KITCHEN FLOOR can be installed using diverse grades of granules and according to a selection of RAL colors. Pastel shades like pearl white, light ivory, light gray or platinum underline a high-quality, homogeneous look. Colored grains such as bright yellow, bright orange, bright green tones or traffic gray emphasize the diversity of available designs. Specialized granules are available based on RAL colors for areas over 200 m².

FEATURES

BARiT KITCHEN FLOOR is made of water-clear, epoxy resin and polyurethane coated colorfast granules and is installed in a layer 8 - 10 mm thickness. It can be installed on top of calcium-sulfate based false and subflooring, cement as well as anhydrite flooring, and especially on heated flooring. This covering is installed without any joints or edges, eliminating any hazards for tripping. In addition, the seamless design provides hygienic protection.

BARiT KITCHEN FLOOR, due to its load-bearing capacity and resistance to high wear, is ideal for high traffic areas. The surface maintains very low abrasion when consistently exposed to chair castors. Due to its seamless surface, BARiT KITCHEN FLOOR is easy to clean and maintain.

TYPE	KITCHEN FLOOR R11
Binding agent	EP-resin
Fillers	Granulates
Solid matters	100 %
Flash point	> 100 °C
Consumption/m²	2 kg/mm
Grain	BARiT card of grains
Grade of gloss	silk gloss or mat
Fire behaviour DIN EN 13501-1	Bfl-s1, hardly inflammable
Bending tensile strength DIN 1164**	> 10 N/mm²
Compression strength DIN 1164**	> 40 N/mm²
Adhesive pull strength DIN EN 24624	> 2 N/mm²
Light-fastness	conditionally resisting to UV
VOC Emission	Meets the requirements of AgBB
Anti-slip Class DIN 51130	R9, R11
Barefoot Suitability DIN 51097	B and C
Temperature resistance	100 °C temporarily -30 °C to +70 °C consistently
Chemical resistance	to resistance list and self test
Working under conditions of:	
air humidity	40 - 85%
residual moisture of the ground	< 3 %
ground temperature min.	18 °C
ground temperature max.	22 °C
Curing time at 20°C:	
not sticky	after 12 hours
walking admissible	after 16 hours
final hardness	after 7 days
Mechanical stability	after 7 days fully capable of bearing
Cleaning	BARiT Cleaner*

** with prism method - according to AGI Worksheet A 81 and BEB worksheets KH 5

* according to cleaning and care instructions





Photo: BARiT

BARiT MUSEUMS-TERRAZZO in R9 | Commercial Kitchen

Ernst Klett Verlag, Stuttgart



Photo: BARiT

Ernst Klett Verlag, Stuttgart

DEFINITION AND PURPOSE

The MUSEUMS-TERRAZZO offers hygienic safety, good step security and variety in design for the transformation of staff restaurants, free-flow and catering concepts.

The low panel thickness, the seamless design and the high strength of the MUSEUMS-TERRAZZO speak for themselves in achieving a special atmosphere. Due to its modest homogeneity BARiT MUSEUMS-TERRAZZO blends harmoniously into sensitive colour concepts. The monochrome, single-colour aesthetic emphasises modernity.

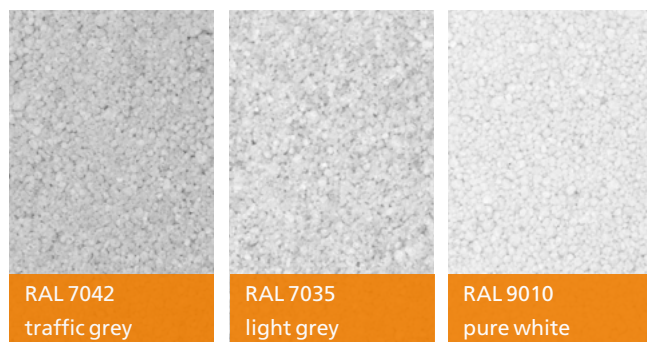


Photo: BARiT

stair-step with stainless steel edge

Quick Info

- seamless
- aesthetic
- antibacterial
- slip-proof in accordance with BGR 181 R 9
- non-skid according to BGR 181, R11, R12
- chemical and mechanical stability
- suitable for wheelchairs
- easy to clean and disinfect
- fire prevention classification Bfl-s1
- low emissions according to AGBB



APPEARANCE

The ideal starting point for aesthetic appearances, the application expertise that is the hallmark of BARiT has always been greatly valued. The timeless design of MUSEUM TERRAZZO is accented by the quality of the granules that give the satin finish a slightly metallic character. MUSEUM TERRAZZO can be installed using diverse grades of granules and according to a selection of RAL colors.

Pastel shades like pearl white, light ivory, light gray or platinum underline a high-quality, homogeneous look.

Colored grains such as bright yellow, bright orange, bright green tones or traffic gray emphasize the diversity of available designs.

Specialized granules are available based on a selection of RAL colors for areas over 200 m².

FEATURES

MUSEUM TERRAZZO is made of water-clear, epoxy resin and polyurethane coated colorfast granules and is installed in a layer 8 - 10 mm thick. It can be installed on top of calcium-sulfate based false and subflooring, cement as well as anhydrite flooring, and especially on heated flooring. This covering is installed without any joints or edges, eliminating any hazards for tripping. In addition, the seamless design provides hygienic protection.

The MUSEUM TERRAZZO, due to its load-bearing capacity and resistance to high wear, is ideal for high traffic areas. The surface maintains very low abrasion when consistently exposed to chair castors. Due to its seamless surface, MUSEUM TERRAZZO is easy to clean and maintain.

TYPE	MUSEUMS-TERRAZZO
Binding agent	EP-resin
Fillers	granulates
Solid matters	100 %
Flash point	> 100 °C
Consumption/m ²	2 kg/mm
Grain	BARiT card of grains
Grade of gloss	silk gloss or mat
Fire behaviour DIN EN 13501-1	Bfl-s1, hardly inflammable
Bending tensile strength DIN 1164**	> 10 N/mm ²
Compression strength DIN 1164**	> 40 N/mm ²
Adhesive pull strength DIN EN 24624	> 2 N/mm ²
Light-fastness	conditionally resisting to UV
VOC Emission	Meets the requirements of AgBB
Anti-slip Class DIN 51130	R9
Barefoot Suitability DIN 51097	B and C
Temperature resistance	100 °C temporarily -30 °C to +70 °C consistently
Chemical resistance	to resistance list and self test
Working under conditions of: air humidity residual moisture of the ground ground temperature min. ground temperature max.	40 - 85% < 3 % 18 °C 22 °C
Curing time at 20°C: not sticky walking admissible final hardness Mechanical stability	after 12 hours after 16 hours after 7 days after 7 days fully capable of bearing
Cleaning	BARiT Cleaner*

** with prism method - according to AGI Worksheet A 81 and BEB worksheets KH 5

* according to cleaning and care instructions



Recessed box in floor with electric installation

